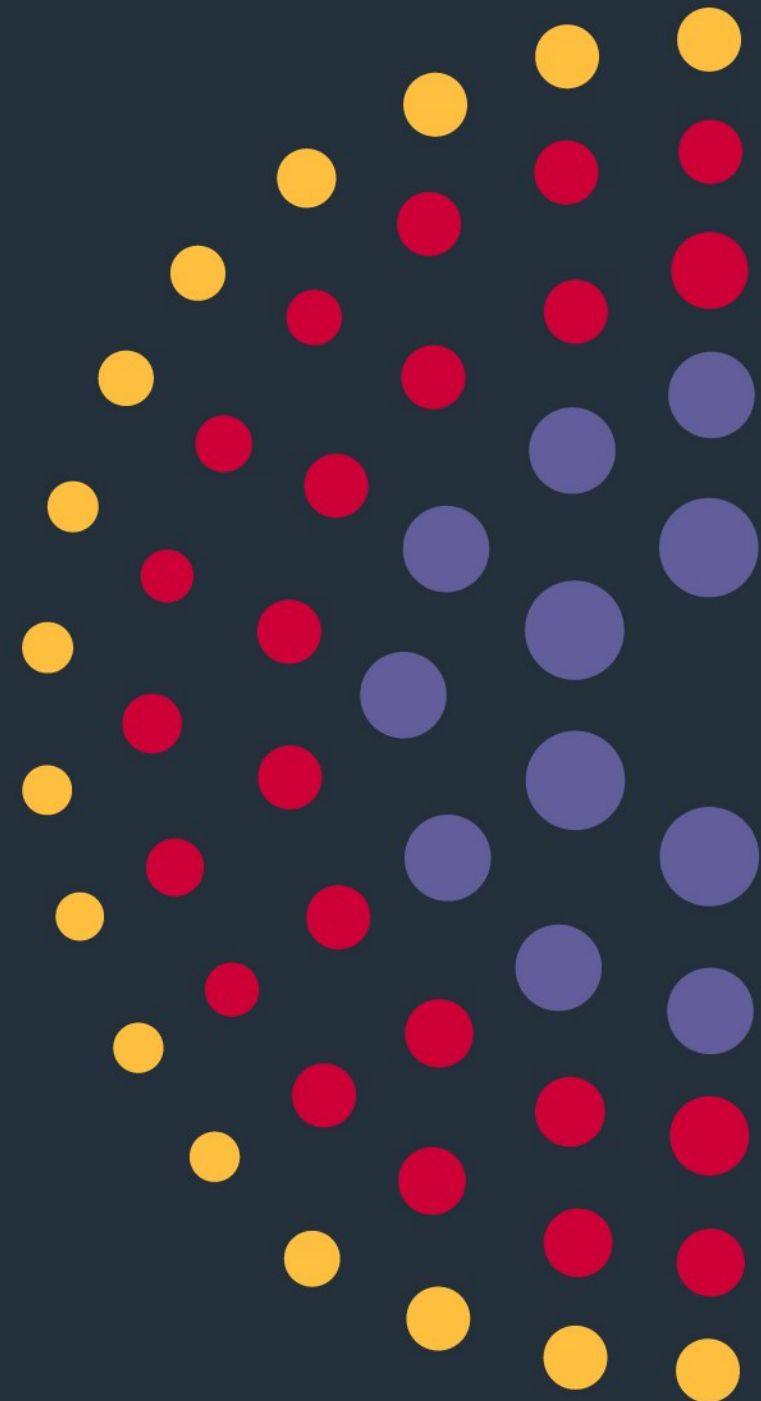




STUDYING MEDICINE AS A GRADUATE

Dr Veronica McKay
Director of Admissions



DISCLAIMERS

- Information provided is to the best of my current knowledge
- Always check the detailed selection policy of the medical schools in each application cycle
- Always check for updated information from official sources
- All information is subject to change

February 2024



AIMS OF SESSION


- Medicine as a career
- Types of UK Medical Programmes
- Choosing a UK Medical School
- Entry requirements and selection process
- Finance
- Top Tips
- HYMS MB BS and MSc Physician Associate Studies



MEDICINE AS A CAREER



A CAREER IN MEDICINE

- Intellectually stimulating, vocationally rewarding, daily variety, lifelong learning
 - Medical profession—high public trust and confidence, GMC regulation,
 - NHS careers -guaranteed NHS employment, wide range of speciality training, flexible working, national tiered income with NHS pension,
 - Non-NHS careers-academic/laboratory, private health/industry sector, media, medico-political, international,
- 

NHS POSTGRADUATE TRAINING

- General training-UK Foundation Programme 2Y
FY1(GMC Full Licence to Practice) > FY2



- General Practice (FY3) 3-8Y Specialty training
(61 CCT, 40 subsp.)



- General Practitioner (Portfolio) Consultant Specialist,



BUT.....

- long hours, unsociable working patterns, prolonged post graduate specialist/higher specialist training, burden of patient care can be emotionally and physically draining, challenges to work- life balance, negative impact on personal wellbeing and family life
- It can be relentlessly demanding and some doctors are choosing to work P/T, work overseas, leave or retire early from the medical profession

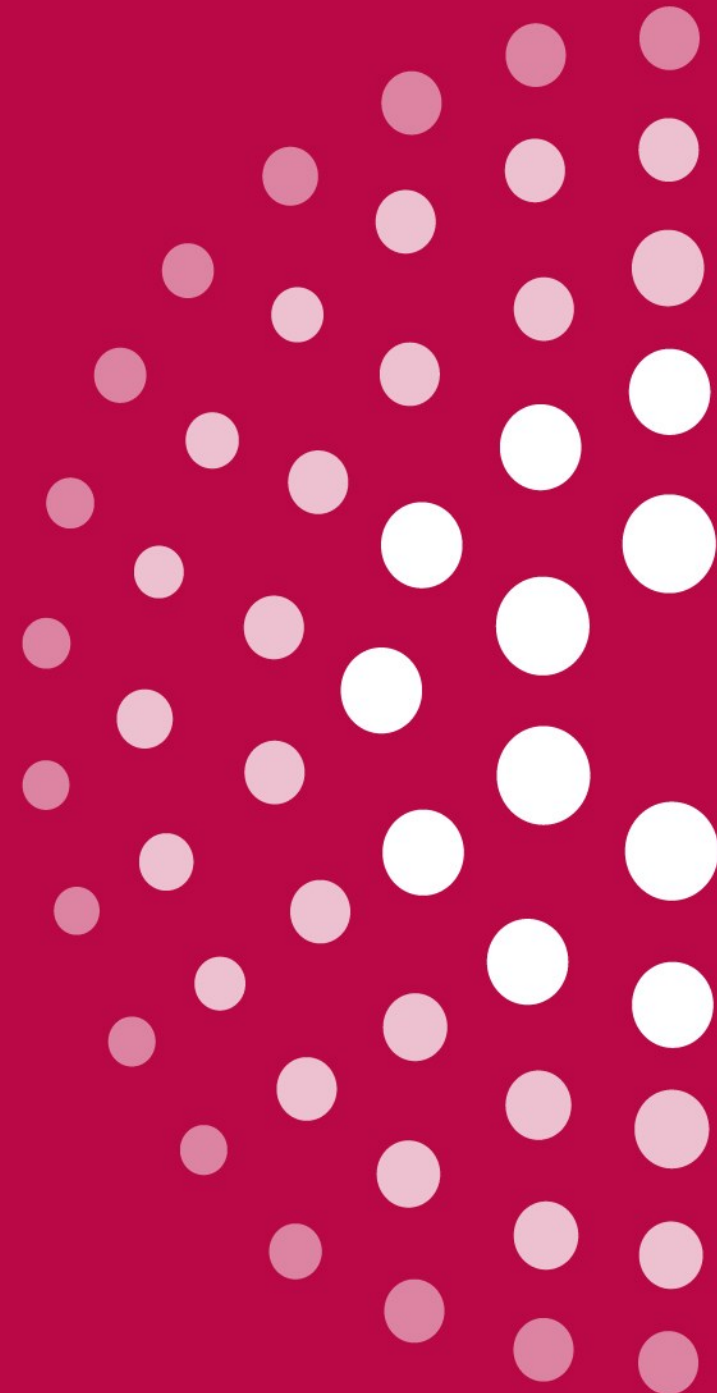


ALTERNATIVE NHS HEALTHCARE CAREER OPTIONS

- Physician Associate
- Allied healthcare professions (14)- physiotherapy, radiography, nursing, paramedics etc.
- Healthcare Scientists, Therapeutic and Technical staff, Digital NHS,
-NHS employs 1.5 million people and is the UK's biggest employer



TYPES OF UK MEDICAL PROGRAMMES



TYPES OF MEDICAL COURSES

- 6Y-Medicine with Foundation/Gateway/Preliminary Year
- 6Y-Medicine with an Intercalation Year
- 5Y-Standard Course (Hull York Medicine School)
- 4Y-Graduate Entry Medicine
- General Medical Council regulates all UK medical school courses
- From 2024-25 onwards all UK medical students will need to sit the MLA with their final medical school exams and achieve a pass to join the GMC Medical Register



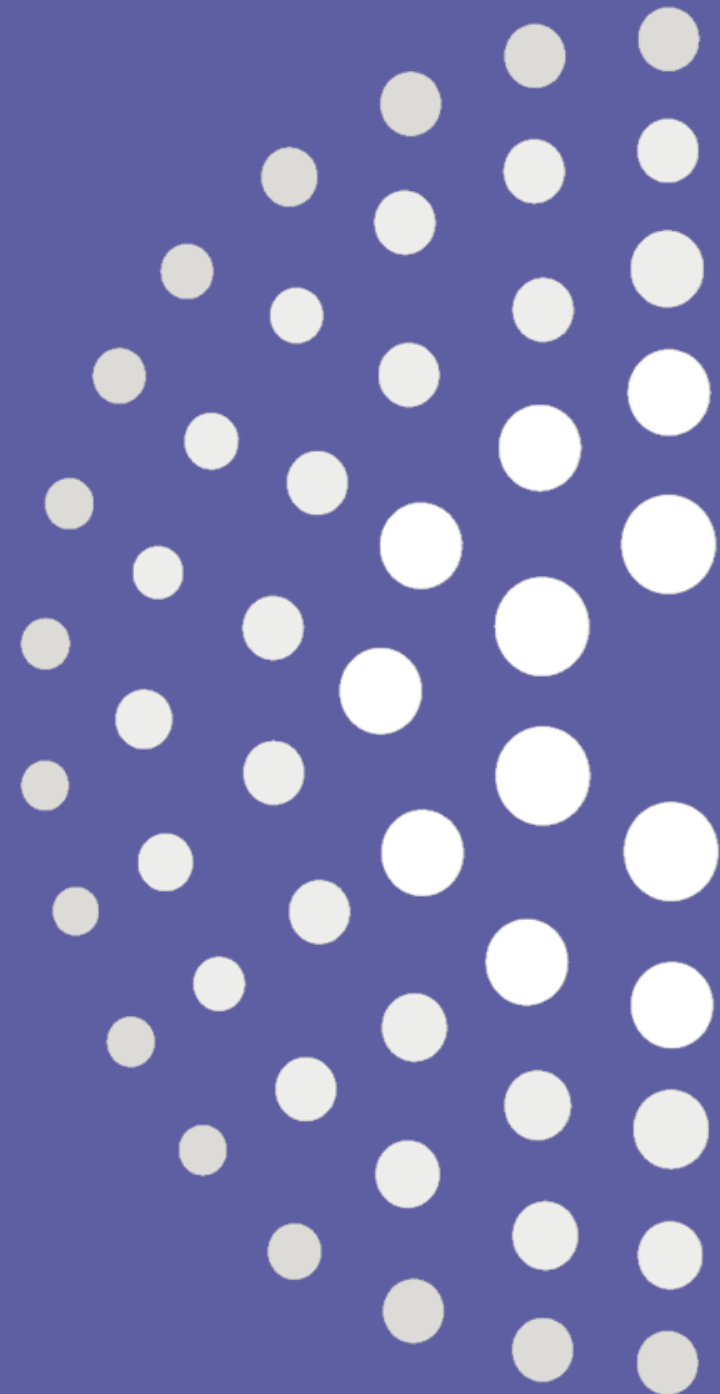
STANDARD

- Longer 5Y
- Funding is very limited
- Competitive
- Larger cohort intake

GRADUATE (GEM)

- Shorter 4Y
- Some funding available
- Highly competitive
- Smaller cohort intake

CHOOSING A UK MEDICAL SCHOOL



CHOOSING MEDICAL SCHOOLS FROM 44 OPTIONS

- Size
- Course structure (Traditional/Integrated)
- Curriculum
- Teaching Style (Traditional/Integrated/PBL)
- Older v New
- Geographical region
- Strategy – entry requirements



ENTRY REQUIREMENTS

- Vary with each medical school
- GCSEs, A Levels or equivalents (specific subjects), Graduates-2:1 (specific degrees)
- Admissions tests-UCAT, BMAT(2023), GAMSAT
- Work-related experience
- UCAS deadline 16th October



ADMISSIONS TESTS

- UCAT (> 40 medical schools, x1/cycle)
- BMAT discontinued from 2025-entry
- GAMSAT (11 medical schools, >1/cycle March Sept)
- Check official sources for relevant information !



WORK EXPERIENCE

- Realistic understanding of working within healthcare and researching a medical career,
- People facing – "out with your comfort zone ", voluntary, paid–care setting, public setting, home
- Shadowing - community, primary or secondary
- Online clinical –Medical School Council resources
- Reflection>personal statement>interview
- Core values, skills and attributes needed to study medicine

REFLECTION

- Reflection on their practice is an essential professional behaviour of being a doctor, or any healthcare professional.
- GMC: The reflective practitioner: guidance for doctors and medical students
- RCGP/MSCSA: Inspiring and Preparing Tomorrow's Doctors Reflective Diary
- Reflective Models- " what, so what, now what"

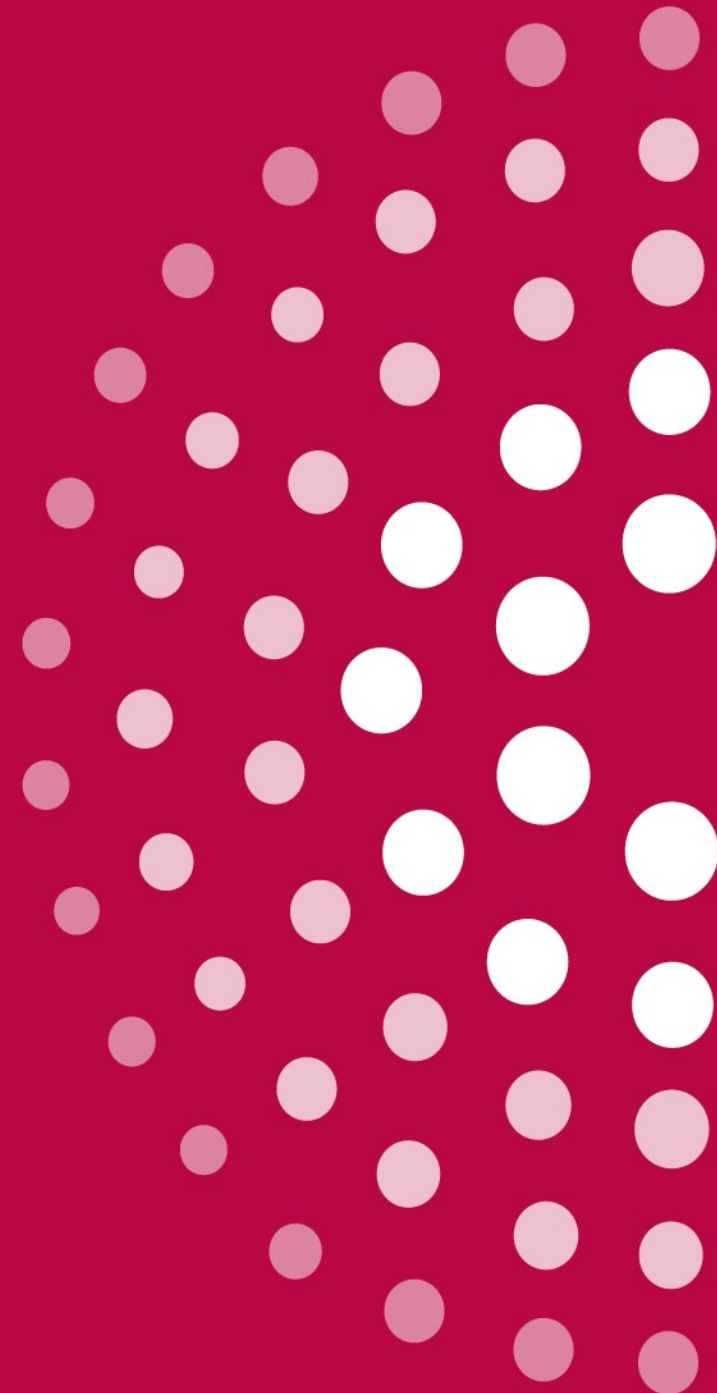


PREPARATION FOR INTERVIEW NON-ACADEMIC REQUIREMENTS

- Ability to communicate
- Attitude and suitability (core values, attributes)
- Motivation to become a doctor
- That you care
- Knowledge of what is happening within medicine and the NHS
- Why did you choose this medical school-will you be a good fit?
- Practice but avoid being formulaic /over-rehearsed



MEDICINE APPLICATION TIMELINE



STEP 1: MEDICINE APPLICATION PROCESS

- Planning-18 months ahead of year of entry
- Work experience
- Medical school research incl Open Days
- Admissions Tests within year of application
- Final Selection of 4 Medicine programmes
- UCAS application deadline 16th October

STEP 2: MEDICAL SELECTION PROCESS

- UCAS application academic screening
- Admissions Test score
- Interviews-panel, multiple mini-interviews (MMIs), assessment centres, online format,
- Applicants will be well briefed but should prepare
- Offers made-one firm, one reserve,



2024-ENTRY ADMISSIONS CYCLE

- 24150 applications for 7100 H 500 OS
- Nationally decreased by 10% (-10% in 2023)
- Re-applications decreased by 28% (-7% in 2023)
- Virtual or in person interviews



- Highly competitive selection process over next 1-2 admission cycles

FINANCE



FUNDING – YEAR 1

Year 1	England Undergraduates	England Graduates Standard Course	England Graduates 4-year GEM course
Tuition Fee	Fee loan: up to £9,250	No loan available	Self-fund first £3,465. Fee loan: up to £5,785
Maintenance Loan	Up to £8,700	Up to £8,700	Up to £8,700
NHS Grant			
HYMS Bursary	£2400 (<25k RHI)	£2400 (<25k RHI)	



FUNDING – YEARS 2 TO 4

Year 2-4	England Undergraduates	England Graduates Standard Course	England Graduates 4-year GEM course
Tuition Fee	Fee loan: up to £9,250	No loan available	NHS pays first £3,715 Fee loan: up to £5,535*
Maintenance Loan	Up to £8,700	Up to £8,700	Up to £2,324 (up to £1,811 final year)
NHS Maintenance Bursary			Up to £4,491*
NHS Grant			£1000
HYMS Bursary	£2400 (<25k RHI)	£2400 (<25k RHI)	



FUNDING – YEAR 5

Year 5	England Undergraduates	England Graduates Standard Course	England Graduates 4-year GEM course
Tuition Fee	NHS pays full fee*	NHS pays full fee	
Maintenance Loan	up to £2324 final year	up to £2324 final year	
NHS Maintenance Bursary	Up to £4,491*	Up to £4,491*	
NHS Grant	£1000	£1000	
HYMS Bursary	£2400 (<25k RHI)	£2400 (<25k RHI)	



TOP TIPS



TOP TIPS

- Research
- Strategic
- Keep a reflective log of experiences and link the "now what" into your personal statement and for interview prep
- Keep up to date with key medical topics/ developments in the year before interview-read different sources,
- Practice answering questions with structured answers on a range of topics with different perspectives, viewpoints including your own
- Practice but be flexible, in the moment and "authentic" in your answers



RESOURCES

- Medical School Council

<https://www.medschools.ac.uk>

- RCGP/MSCSA: Inspiring and Preparing Tomorrow's Doctors Reflective Diary

<https://www.rcgp.org.uk/getmedia/02dcaf12-9cf9-4494-86db-745d422d76e8/RCGP-reflective-diary-June-2019.pdf>

- General Medical Council

<https://www.gmc-uk.org/ethical-guidance/ethical-guidance-for-doctors/good-medical-practice>

- Finance

<https://rmbf.org/get-help/help-for-medical-students/medical-student-advice-hub/medicine-as-a-second-degree/>



MB BS

- standard 5-year programme
- Uni of York alumni have campus choice
- Uni of York BSc Biomedical Sciences - fast track interview if UCAT decile 4> SJT Band1-3
- UoY [Open Days](#) June 2024, mid-September 2024-check UoY website
- <https://www.hyms.ac.uk/medicine>



MSC PHYSICIAN ASSOCIATE STUDIES

- 2 year programme
- Based on University of Hull campus
- 10% alumni tuition fee discount
- Post graduate Master's loan
- HEE funding £2,500/year
- <https://www.hyms.ac.uk/postgraduate-taught/msc-in-physician-associate-studies>



ANY QUESTIONS ?

www.hyms.ac.uk

Email furtherenquiries@hyms.ac.uk



MSc in Physician Associate Studies

Dr Veronica McKay
Director of Admissions

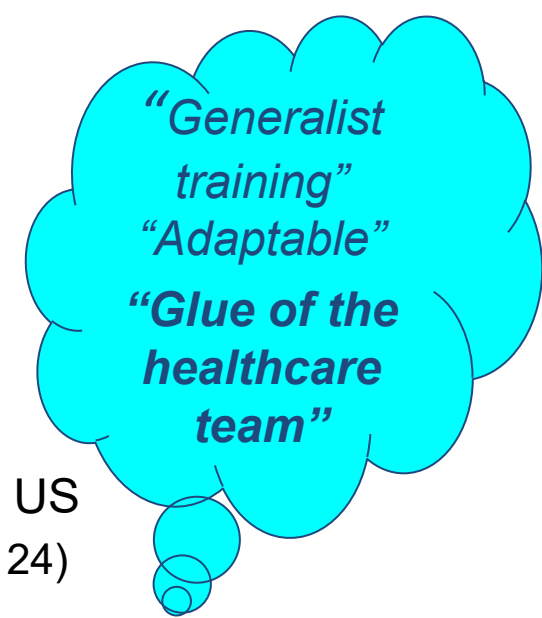
A Physician Associate is...

*“...**collaborative** healthcare professional with a **generalist medical education**, who works alongside doctors, GPs and surgeons providing medical care as an integral part of the **multidisciplinary team**. PAs are **dependent** practitioners working with a dedicated supervisor but are able to work **independently** with appropriate support.”*



Who are PAs?

- Relatively new healthcare role in UK, firmly established in US
 - There are now over 3000 PAs practicing in the UK (FPA Jan 24)
- The general medical training of PAs facilitates:
 - patient histories
 - physical examinations
 - clinical reasoning including diagnosis, investigation, interpretation, intervention, and long-term management
 - health promotion & disease prevention
- PAs perform complex diagnostic & therapeutic procedures:
 - Investigations: Ultrasound, ECG, phlebotomy, blood gases, ophthalmoscopy, otoscopy...
 - Interventions: Advanced life support, trauma management, airways management...
 - Procedures: Minor surgeries, surgical assistance, emergent reductions & blocks...
- PAs are unable to prescribe and request ionising radiation
- Regulation is progress by the GMC (implementatation late 2024)



Why do we need PAs?

- NHS pressures:
 - Demographic change (ageing population, complex health needs)
 - Workforce challenges (skill mix, increasing “list sizes” in GP practices)
 - Difficulties recruiting (e.g. GPs, Hospital Specialists)
 - 24/7 public access
 - A greater number of clinicians required to deliver greater access
- PAs provide direct medical cover & expertise for underserved areas of healthcare
- The demand for UK Clinicians far outstrips supply
 - PA programmes provide a non-traditional route into Medical Practice for Healthcare Science graduates
 - High-quality training, delivered in 2 years, building on the existing skills-set of graduates





Physician Associates in Practice

Primary Care PA General Practice

- 8-11am
 - Open access clinic (up to 20 patients) or minor surgery with GP
- 11am-12pm
 - Admin jobs including referrals, letters, filing test results, telephone appointments/follow ups
- 12-2pm
 - Home visits... lunch!
- 2-4pm
 - PM clinic, 8 routine appointments (acute, chronic, follow ups)

Secondary Care PA Hospital Ward

- 9-10am
 - Ward round & handover
- 10am-12pm Post-round take
 - Clerking new patients, bloods, ordering & interpreting investigations, referrals
- 12-12:30pm LUNCH!
- 12:30-4pm
 - Reviewing ill patients handed over by the nurses
 - Checking investigations ordered earlier
 - Preparing handover for the Night-Team

MSc in Physician Associate Studies

**Dr Veronica McKay,
Director of Admissions**

HYMS MSc in PA Studies

- The HYMS PA Programme provides:
 - *“comprehensive & rigorous general medical training that provides highly-skilled graduates an opportunity to extend their skills set, and apply it to direct patient-care”*
- Established at HYMS in September 2016
- ~60 students (2 cohorts) (many with a strong local connection)
- Intensive 2-year professional MSc integrated with clinical practice (90 weeks)
- Fulfills/exceeds requirements of the new GMC PA curriculum
- Themed-weekly learning - structured around Organ systems, organised by clinical discipline



Course Content – Year 1

- **Introductory Medicine & Clinical Science & Practice I**
 - Problem-Based Learning
 - Primary Care Placements [1 day weekly]
 - Secondary Care placements [2 days weekly]
 - Skills: Clinical [examination & communication] & procedural [procedures and technique]
- **Foundations of Pharmacology**
 - The theoretical underpinning of Pharmacology and drug interactions
- **Therapeutics for Healthcare Professionals**
 - Understanding the basis of prescribing and pharmaceutical management

Term 1	Term 2	Term 3
INTRODUCTORY MEDICINE FOR PHYSICIAN ASSOCIATES (20 credits)	CLINICAL SCIENCE AND PRACTICE I (30 credits)	
FOUNDATIONS OF PHARMACOLOGY FOR HEALTH CARE PROFESSIONALS (20 credits)	THERAPEUTICS FOR HEALTH CARE PROFESSIONALS (20 credits)	



Course Content – Year 2

- **Clinical Science & Practice II**
 - Specialty Placements: Gynaecology & Obstetrics, Psychiatry, Community Medicine, Surgery, and Paediatrics
 - Primary Care placement
- **Clinical Science & Practice III**
 - Emergency Medicine Placements: ED and Urgent Care
 - Elective Placement
- **Quality Improvement Project**
 - Masters level research on the affectation and implementation of a change in the local Health Service to benefit patient outcomes

Term 1	Term 2	Term 3
CLINICAL SCIENCE AND PRACTICE II (30 credits)		CLINICAL SCIENCE AND PRACTICE III (30 credits)
QUALITY IMPROVEMENT RESEARCH PROJECT (30 credits)		



Fees & Funding

- £10,590 per annum (UK)
- £29,400 (EU/International)
- **Health Education England Bursary**
£5,000 per student [£2,500 per annum]
- **Graduate Scholarship**
10% fees reduction for UoH/UoY Graduates
- **PA Scholarships**
4 x £1000 (highest scores at interview)
- PG Masters Loan (£12,167)
- UoH & UoY funding opportunities available on a discretionary basis
- Bursary opportunities



Entry Requirements

- Graduate in a relevant Biosciences degree 2:1
 - e.g.: Biomedical Science, Pharmacology, Biochemistry, Sports Science, Human Biology
 - Grade of 2:1 or above, or to be predicted to achieve this at the time of graduation
- Grounding in Chemistry during the course of the Undergraduate degree, or at A-Level/equivalent
- GCSE's in English Lang/Lit (6/B or 5/C if higher degree) and Maths (5/C) [alternative qualifications may be considered]
- IELTS score of ≥ 7.5 [≥ 7.0 per component as minimum]

- More information at www.hyms.ac.uk/physicianassociate

PA Person Specification

Essential

- Excellent interpersonal and communication skills
- Clear understanding of the role of a Physician Associate
- Well-developed organisation and time management skills
- Enthusiasm to develop a career as a healthcare professional
- Self-motivated and resilient
- Fully supports the values outlined in the NHS Constitution
- Good general ICT skills and digital literacy

Desirable

- Experience of working in a team
- Work experience in a clinical or healthcare environment [Clinical/Care/Clerical]
- Knowledge and understanding of England's NHS



How to Apply

- The First stage of the process is via UCAS website (link from HYMS PA webpages):
 - <https://digital.ucas.com/coursedisplay/courses/d8f276a9-a4f0-4291-96d0-0966a0e7f5d8?academicYearId=2024>
- Following fulfillment of the eligibility criteria, successful candidates will be invited for interview
- Closing date: **31 January 2024**
- Interviews: **28 February 2024 and 17 April 2024**

- Programme Enquiries:
 - pgtadmissions@hyms.ac.uk
- MSc in Physician Associate Studies website:
 - <https://www.hyms.ac.uk/postgraduate-taught-degrees/msc-in-physician-associate-studies>
- Programme Director: Dr Andy Brown
 - andrew.brown@hyms.ac.uk